



## Die Forstwirtschaft muss sich anpassen:

### Digitale Standortinformationen erleichtern den klimagerechten Waldumbau

Christian Kölling



Bayerische Landesanstalt für Wald und Forstwirtschaft




## BaSIS für den klimagerechten Waldumbau





**Bayerisches Standort-Informationssystem**

## BaSIS für den klimagerechten Waldumbau


Was brauchen die Bäume?



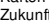
KLIP 3:  
Bäume für die Zukunft



Was bieten die Waldstandorte?

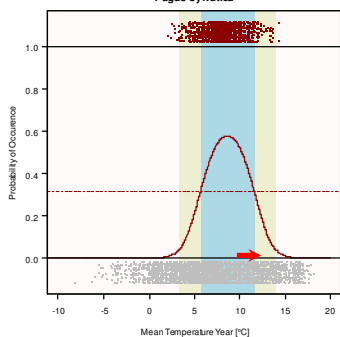


KLIP 4:  
Karten für die Zukunft




## Was brauchen die Bäume?

*Fagus sylvatica*

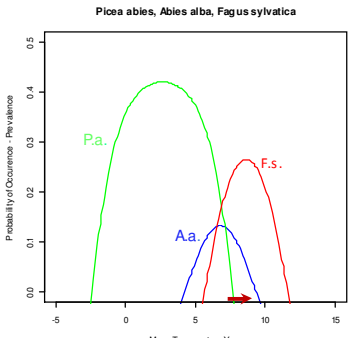


Mean Temperature Year [°C]




## Was brauchen die Bäume?

*Picea abies, Abies alba, Fagus sylvatica*

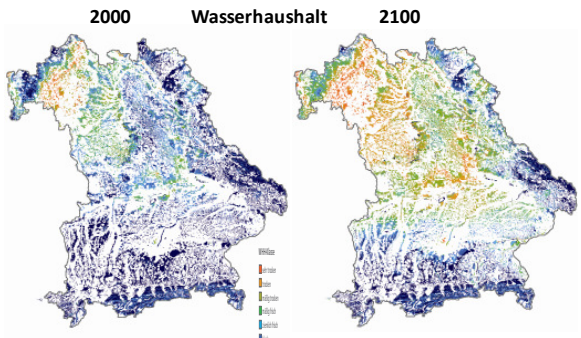



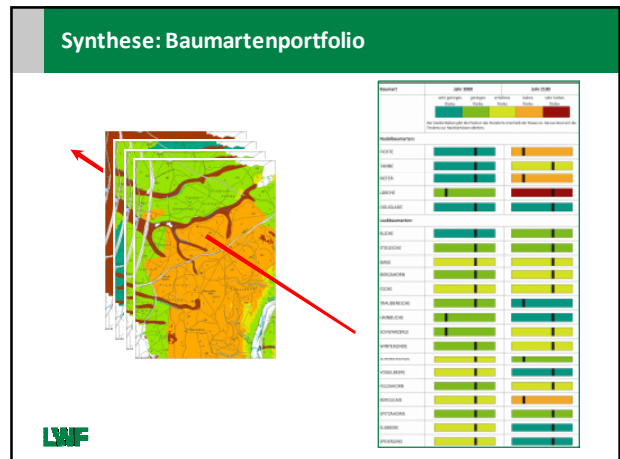
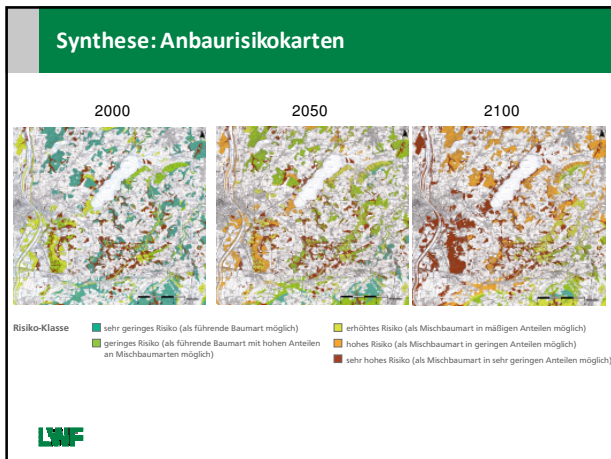
Mean Temperature Year



## Was bieten die Waldstandorte?

2000      Wasserhaushalt      2100



### Klimagerechter Waldumbau

LMF

### Dank

Beck, J. (Leitung)  
 Dietz, E. (Leitung)  
 Falk, W. (Leitung)  
 Bachmann-Gigl, U.  
 Flügel, S.  
 Hahn, J.  
 Hänel, F.  
 Häring, T.  
 Jürgens, K.  
 Mellert, K.  
 Morovitz, D.  
 Osenstetter, S.  
 Reger, B.  
 Schaller, R.  
 Stappert, W.  
 Wasner, J.  
 Weindl, D.  
 Wiester, A.  
 Wilhelm, G.  
 Zipperer, A.

...und dem Geldgeber Klimaprogramm 2020

LMF

